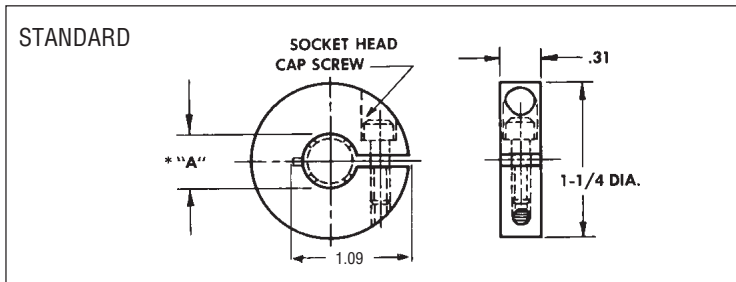


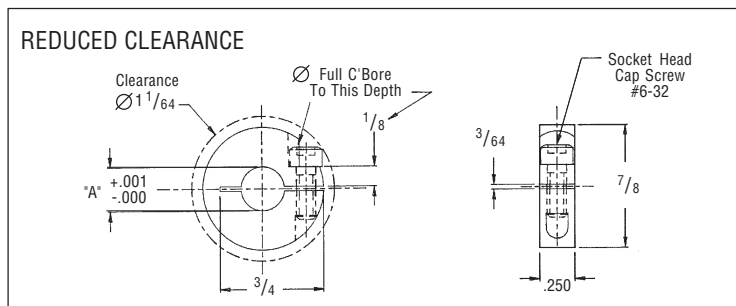
CLAMPS - SPLIT & SCREW TYPES — 1/8" To 1/2" Shaft Size

SPLIT TYPE



Material: 303 Stainless Steel
Clearance radius .63

Ref. Gear Bore	*A $\begin{smallmatrix} +.001 \\ -.000 \end{smallmatrix}$	Part Number
5/16	.375	L1-20
3/8	.437	L1-21
1/2	.562	L1-22

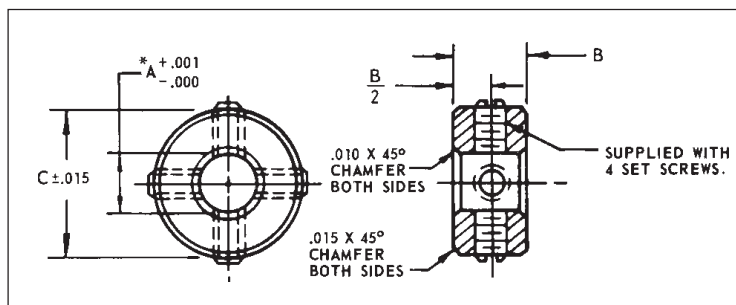


Material: 303 Stainless Steel
Clearance radius .508

Ref. Gear Bore	*A $\begin{smallmatrix} +.001 \\ -.000 \end{smallmatrix}$	Part Number
1/8	.188	L4-1
3/16	.250	L4-2
1/4	.313	L4-3

Also available in Aluminum, Consult Factory

SCREW TYPE



Material: 303 Stainless Steel

*NOTE: "A" diameter is O.D. of split hub gear or sprocket hub & is I.D. of clamp.

Ref. Gear Bore	*A $\begin{smallmatrix} +.001 \\ -.000 \end{smallmatrix}$	A	C	Set Screws	Part Number
1/8	.188	.25	.37	#4-40	L4-13
3/16	.250	.25	.50	#6-32	L4-14
1/4	.313	.25	.50	#6-32	L4-15

Also available in Aluminum, Consult Factory